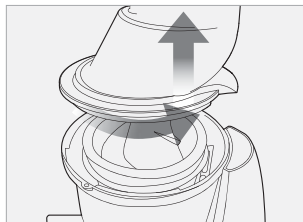


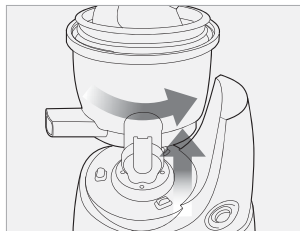
How to Disassemble

1. Switch OFF and unplug the power cord from the wall outlet.
2. Turn the drum lid counter clockwise to open.



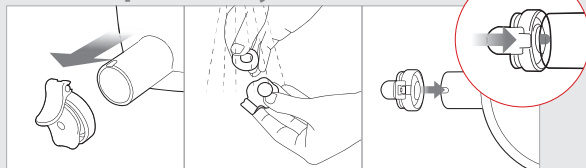
! When moving the appliance, do not lift by grabbing the feeding tube. Always lift the appliance by grabbing the base or handle.

3. Turn the juicing bowl counter clockwise to open.



4. Remove the juicing screw, strainer and rotation wiper unit from the juicing bowl.

Smart Cap Assembly



Detachable smart cap for clean-up

The silicone part of the smart cap can be pulled out for easier clean-up. Attach the smart cap on juice spout.

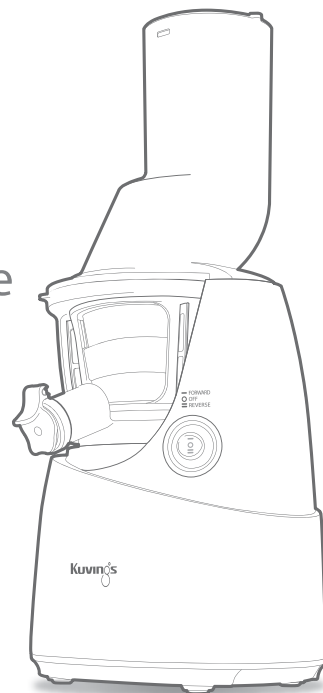
Kuvings
WHOLE SLOW JUICER

M6

Read before first use

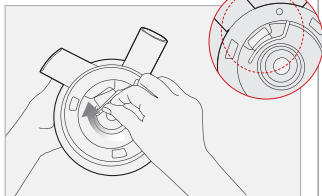
How to assemble & disassemble

Keep where it can be easily accessed.
Read instruction manual for further details.



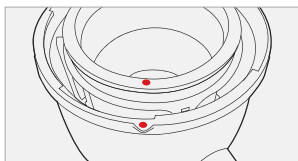
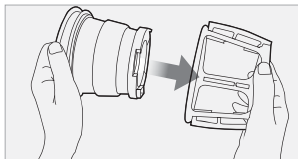
How to Assemble

1. Firmly insert the compression silicone into the slot below the pulp spout.

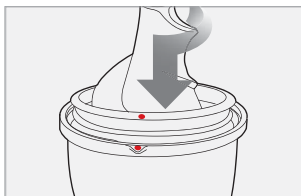


! The Juicer may leak if not assembled properly.

2. Assemble the strainer into the rotation wiper. Place this assembly in to the juicing bowl ensuring the red dot ● on the strainer is aligned with the red dot ● on the juicing bowl.

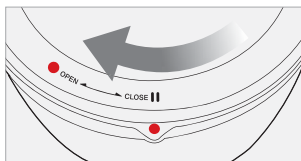
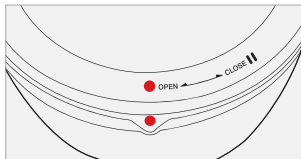


3. Place the juicing screw into the strainer. Turn and press down on it until it clicks into place.

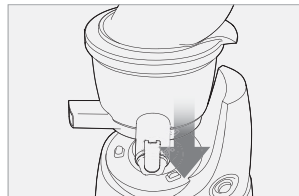


! The juicing screw needs to be locked in place in order to close the drum lid.

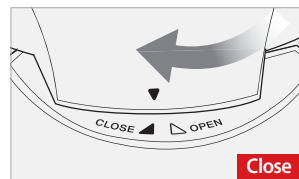
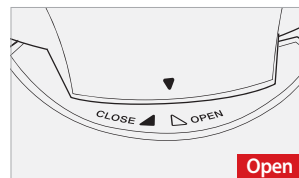
4. Aligning the red dot ● on the drum lid with the red dot ● on the juicing bowl. Turn clockwise to close, aligning the red dot ● on the drum lid with the close mark ||.



5. Place the drum lid on the juicing bowl. Align the down arrow ▼ on the drum lid with the ▽ OPEN mark on the base and turn to the ▲ CLOSE position.

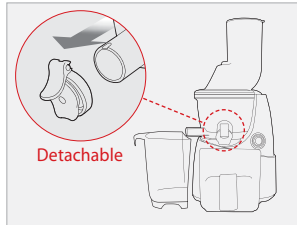


6. Open/Close mark on the top-set.



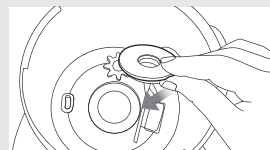
! Juicer will not operate if parts are not assembled properly.

7. Place the pulp cup under the pulp spout and place the juice cup under the juice spout.



Silicone Ring

Push in the silicone ring with the smaller surface facing down.



Silicone Brush

Insert into the slot with the tail pointing down.

